



Features:

- 1. Built-in shut-off valve (remote shut-off)
- 2. Dual sensors and special algorithm to ensure accuracy
- 3. Transmission Position: 10L/100L
- 4. Independently battery package and possible to replace
- 5. Dual battery supply: Hybrid 3.6V Lithium Thionyl Chloride Battery, 5-8 years lifetime
- 6. Ingress protection: IP68

SMART WATER METER

Incometer Smart Water meter model - IKI is an IMPELLER (turbine) water meter with built-in valve, dry type register for residential application with size from Dn15 to Dn25. The model consists of a mechanical water meter, smart valve, intelligent modul with LoRaWAN wireless technique and built-in lithium battery. With the smart module, the analogue reading of the water meter can be digitised and transmitted wirelessly by utilising LoRaWAN technology, significantly speeding up the meter reading speed and avoiding the risk of visual reading errors and fraud.

Certified by:



Sensor implementations:



BUILDING



RESIDENTIAL



INDUSTRIAL ESTATE



MANUFACTURER



Rukan Crown, Blok A No.25, Jl. Green Lake City Boulevard, Tangerang, Banten 15147



+62 813 9999 1485



iki@weiotics.io

<https://weiotics.io/>



IOT KREASI INDONESIA

SMART WATER METER



IKI Incometer - is smart water meter model is IMPELLER (turbine) water meter with built-in valve, dry type register for residential application with sizes from Dn.15 to Dn.25.

smart water meter that comes equipped with an integrated valve. This valve functionality serves the dual purpose of facilitating two different billing systems: postpaid and prepaid

It contains the following main feature:

- Designer for long tern performance
- Extra-dry register
- Built-in shut-off valve (for remote shut-off)
- Dual sensor and special algorithm to ensure accuracy
- Transmission position: 10L/100L
- Battery is independently package and is convenient to replace
- Dual battery supply: Hybrid 3.6V Lithium Thionyl Chloride Battery
- Pre-equipped LoRa module
- LoRaWAN compliance class A

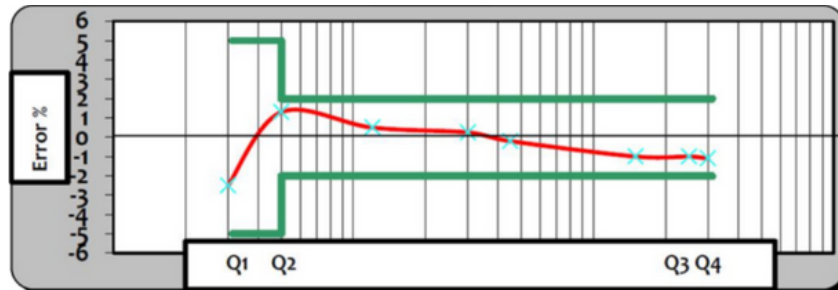
Electrical Parameters

PARAMETERS	SMART WATER METER - INCOMETER
Working voltage	3.6 V
Data collecting way	Dual magentic sensor
Communication mode	LoRaWAN AS923-2 (920-923 mHz)
Channels	8 settable channels with bandwidth of 125kHz
TX power	14dBm
RX sensitivities	Down to -137dBm
Data rate	980bps ~ 3.125Kbps (adaptive data rate)
Environment temperature	-10°C ~ + 50°C
Data report interval: <ul style="list-style-type: none">• 15 minutes• 1 hour• 24 hour	Battery life: <ul style="list-style-type: none">• 1-2 years• 3-4 years• Up to 5 years



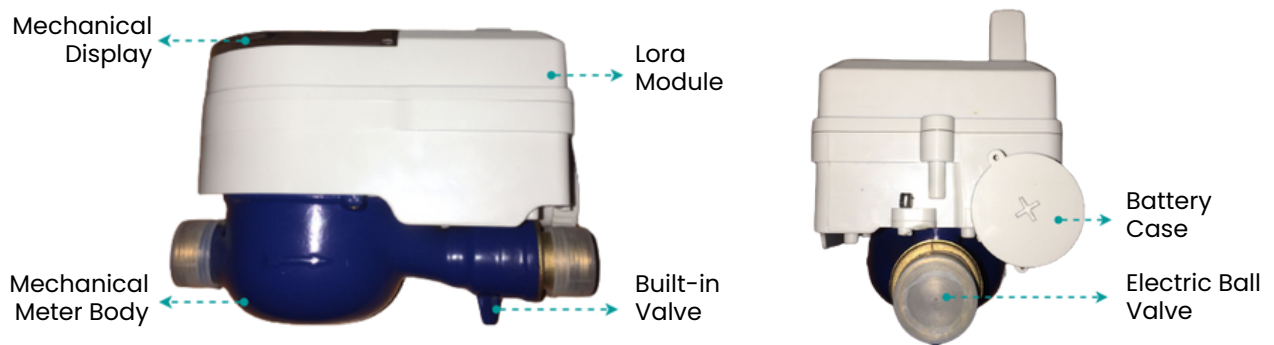
Mechanical Meter

TYPE	SIZE	Max. Flow (Q4)	Normal Flow (Q3)	Transitional Flow (Q2)	Min. Flow (Q1)	Q3/Q1	Min. Reading	Max. Reading
	mm	m3/h		L/h			m3	
Dn. 15	15	2.0	1.6	128	32	50	0.00005	99999
Dn. 20	20	3.125	2.5	200	50			
Dn. 25	25	5.0	4.0	320	80			



- From Q1 inclusive up to but excluding Q2 is $\pm 5\%$
- From Q2 inclusive up to and including Q4 is $\pm 2\%$ for T30 and $\pm 3\%$ for T50

APPEARANCE



Rukan Crown, Blok A No.25, Jl. Green
Lake City Boulevard, Tangerang, Banten
15147



+62 813 9999 1485



iki@weiotics.io

<https://weiotics.io/>



IOT
KREASI
INDONESIA